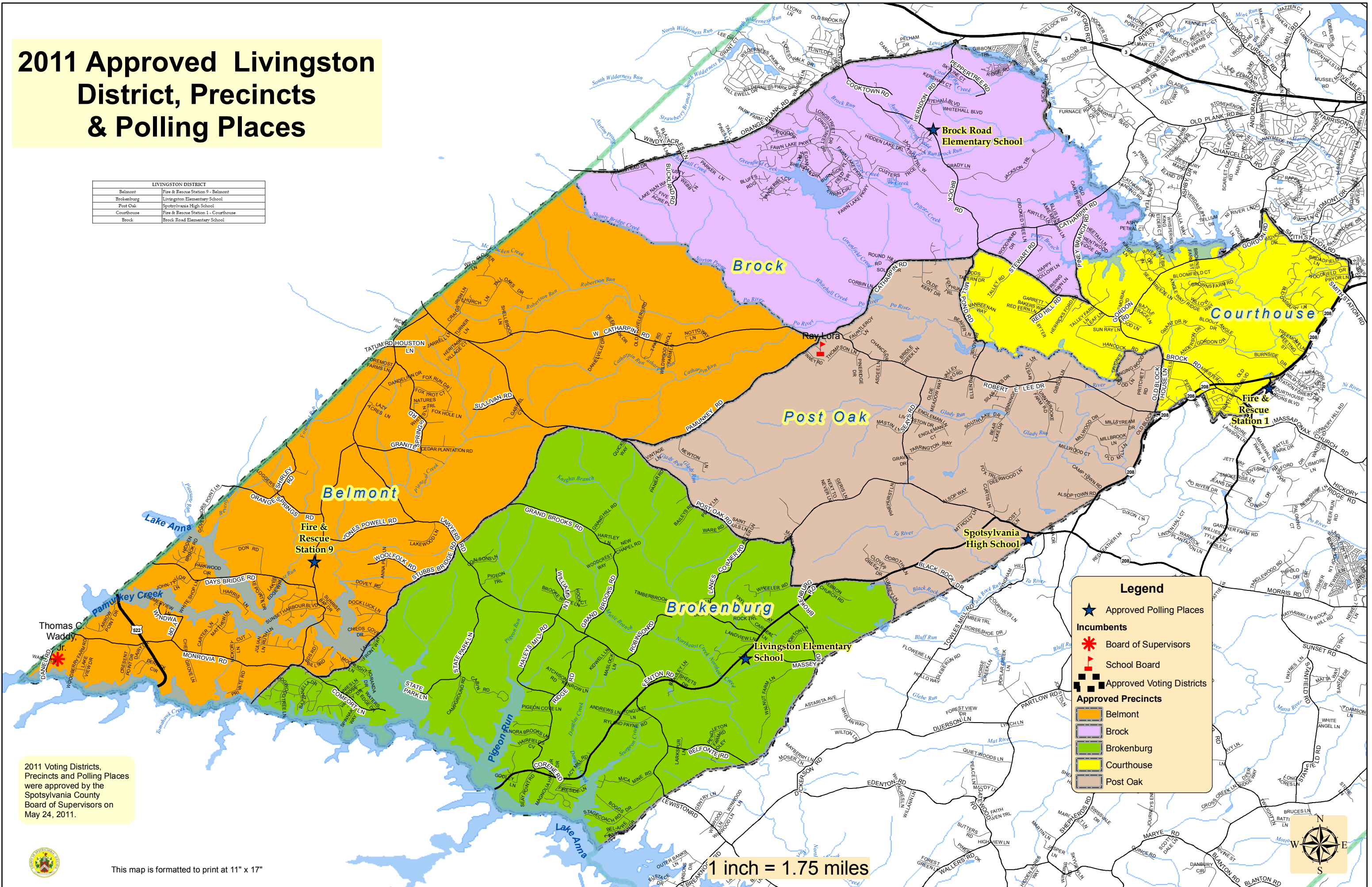


2011 Approved Livingston District, Precincts & Polling Places

LIVINGSTON DISTRICT	
Belmont	Fire & Rescue Station 9 - Belmont
Brokenburg	Livingston Elementary School
Post Oak	Spotsylvania High School
Courthouse	Fire & Rescue Station 1 - Courthouse
Brock	Brock Road Elementary School



Legend

- ★ Approved Polling Places
- Incumbents**
- ✳ Board of Supervisors
- 🚒 School Board
- ▣ Approved Voting Districts
- Approved Precincts**
- 🟠 Belmont
- 🟡 Brock
- 🟢 Brokenburg
- 🟠 Courthouse
- 🟤 Post Oak

2011 Voting Districts, Precincts and Polling Places were approved by the Spotsylvania County Board of Supervisors on May 24, 2011.



This map is formatted to print at 11" x 17"

1 inch = 1.75 miles

